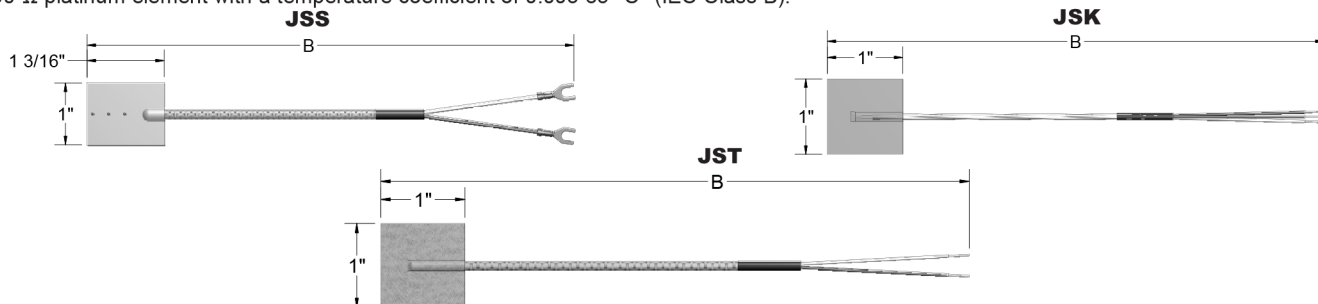


The temperature sensors illustrated below are generally used for surface temperature measurement. The series SS and ST spade thermocouples are sandwiched between two thin shims of either stainless steel or two pieces of fiberglass tape. They can be attached using a worm drive hose clamp or by placing under heater bands. These spades can be formed and secured to the outside of various size tubes, pipes, or nozzles. The SK series sensors are sealed in epoxy between two layers of polyimide tape and are provided with an adhesive backing for easy attachment to many surfaces. The SK series sensors are available in various thermocouple types or RTDs. The RTDs are constructed using a 100  $\Omega$  platinum element with a temperature coefficient of 0.003 85  $^{\circ}\text{C}^{-1}$  (IEC Class B).



## ORDER CODES

**Example Order Number:**

1                      2                      3  
**JSS - F1B036 - 3**

### 1 Thermocouple Type

CODE	DESCRIPTION
JSS	Stainless steel spade
JST	Flexible fiberglass spade 204 $^{\circ}\text{C}$ [400 $^{\circ}\text{F}$ ] max
JSK <sup>[1]</sup>	Flexible Polyimide spade with adhesive tape backing 204 $^{\circ}\text{C}$ [400 $^{\circ}\text{F}$ ]
Nominal spade thickness is 0.020" min to 0.090" max	
<b>Other Element Types</b>	
For type E, K, or T thermocouples, replace J in order code with required letter designation.	
[1] Not available with Fiberglass leadwire.	

### 2 Extension Leadwire "B"

CODE <sup>[1]</sup>	DESCRIPTION
F1_ _ _	Fiberglass insulation - solid conductor
F1B_ _ _	Fiberglass insulation - solid conductor - stainless steel overbraid
F3_ _ _	Fiberglass insulation - stranded conductor
F3B_ _ _	Fiberglass insulation - stranded conductor - stainless steel overbraid
T1_ _ _	Fluoropolymer insulation - solid conductor
T3_ _ _	Fluoropolymer insulation - stranded conductor
K1_ _ _	Polyimide insulation - solid conductor
[1] Insert 3 digit "B" length in inches. EX: F3B024=24" "B" length.	

### 1a RTD Type 100 $\Omega$ Platinum A = 0.003 85 $^{\circ}\text{C}^{-1}$

CODE	ELEMENT CONNECTION	DESCRIPTION
RBF1853SK	3 wire	Flexible polyimide spade with adhesive tape backing 204 $^{\circ}\text{C}$ [400 $^{\circ}\text{F}$ ]
RBF1852SK	2 wire	Flexible polyimide spade with adhesive tape backing 204 $^{\circ}\text{C}$ [400 $^{\circ}\text{F}$ ]
Nominal spade thickness is 0.060" min to 0.100" max		

### 3 Terminations and Options

CODE	DESCRIPTION
0	Leads not stripped
2	2" split leads, 1/4" stripped
3	2" split leads with spade lugs
4	Standard plug
5	Standard jack
6	Miniature plug
7	Miniature jack
8	2" split leads with 1/4" female disconnects
<b>Options</b>	
MC	Mating connector
CC	Cable clamp
BX	Box connector